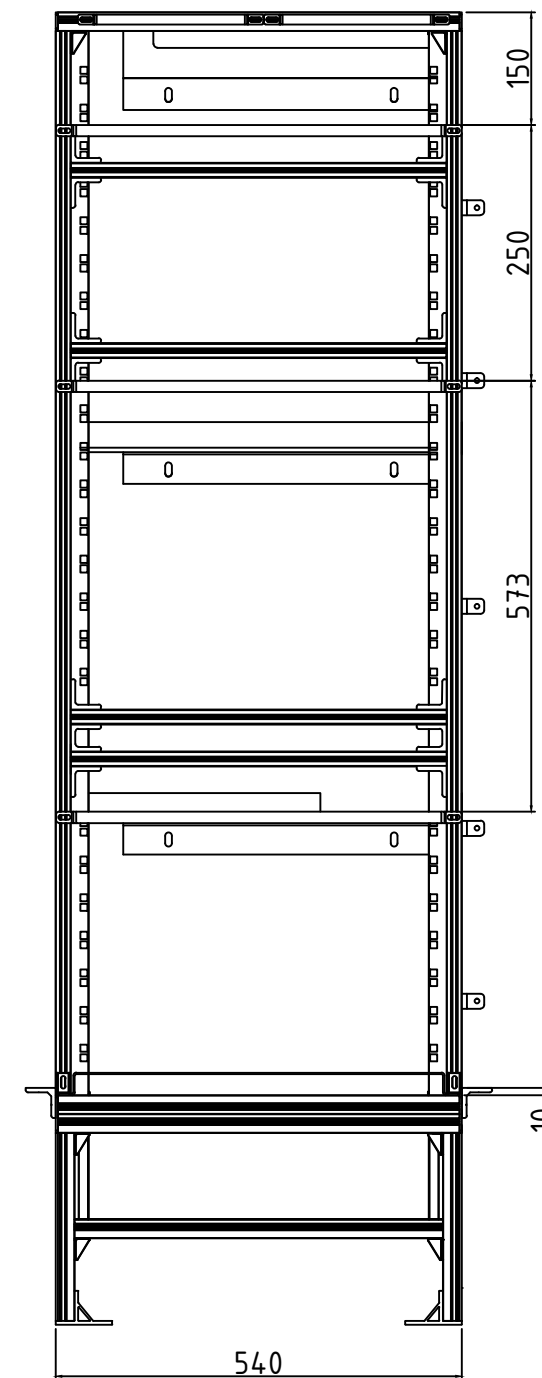
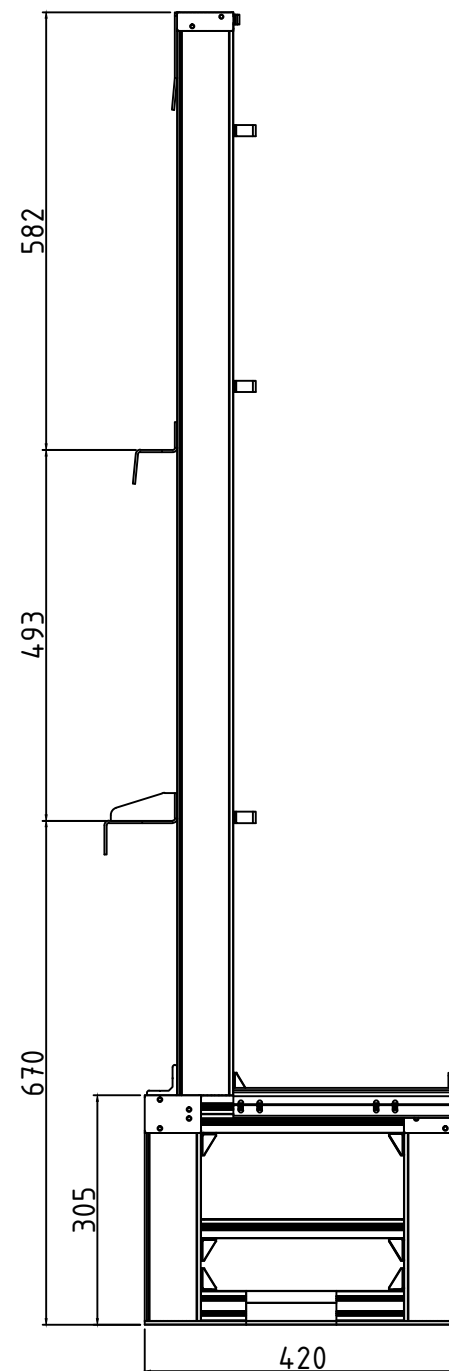
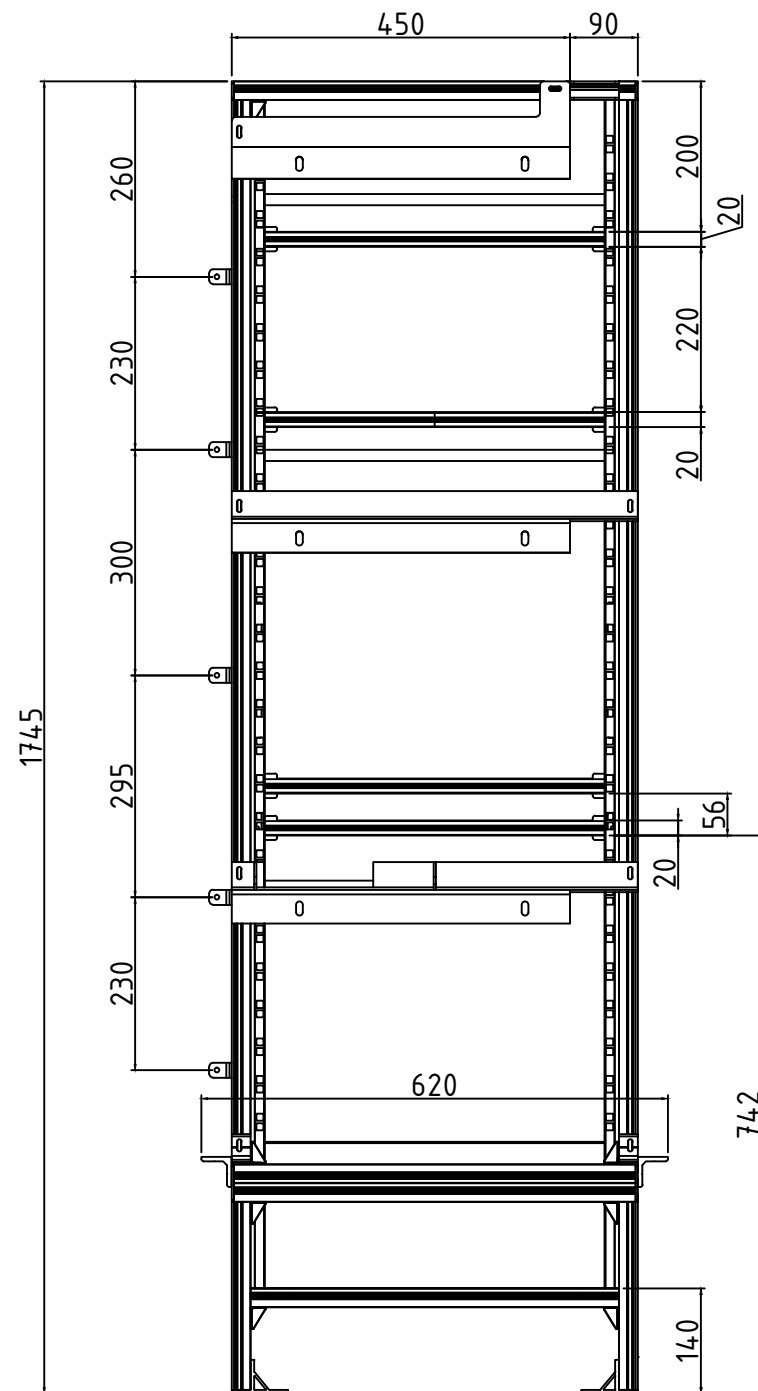
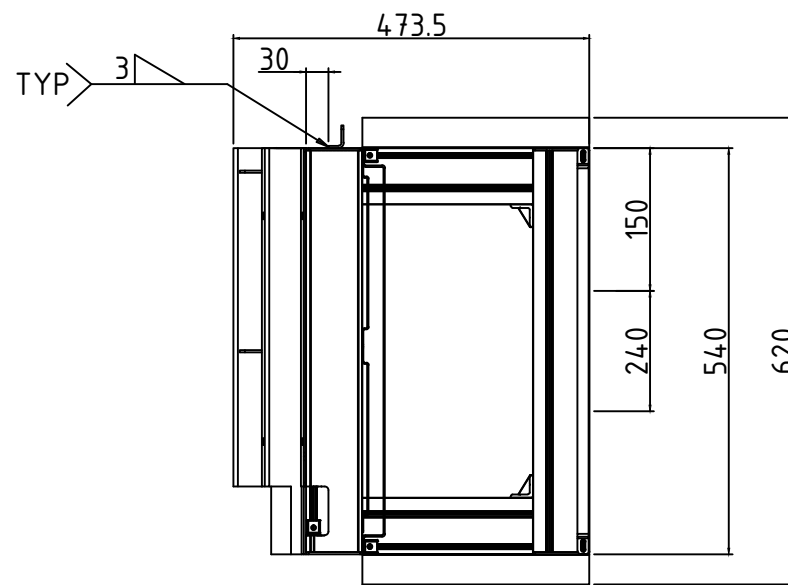


3		2						1			
MACHINING DEVIATIONS FOR LINEAR DIMENSIONS		RANGE	0 - 6	6 - 30	30 - 120	120 - 315	315-1000	1000-2000	2000-4000	ABOVE 4000	RA
TOLERANCE		±0.1	±0.2	±0.3	±0.5	±0.8	±1.2	±2	±3	~	
FOR DIMENSIONAL TOLERANCES OF SHEET METAL PARTS AND WELDED STRUCTURES, REFER STD. RD-227											
[UNSPECIFIED TOLERANCES FOR LINEAR AND ANGULAR DIMENSIONS: REF IS 2102 (PT-1) (MEDIUM)]								[QUALITY OF WELD JOINTS REF. RD. 230 (MEDIUM)]			
VALUES OF SURFACE TEXTURE SHALL BE AS PER COMPANY STD. 1012.C								STATUS:			
WELDING SHALL BE CARRIED OUT AS PER IS: 9595-96											

UNCONTROLLED



NOTE:

1. ALL DIMENSIONS ARE IN mm
2. ALL ALUMINIUM PARTS SHALL BE ANODISED TO Gr.AC15 of IS:1868.

[illegible]